



# Estudos de Caso: Agropecuária de Precisão

Prof. Hemerson Pistori

## Contagem e Estimativa de Massa de Alevinos



# Contagem e Estimativa de Massa de Alevinos



14) -vid 0

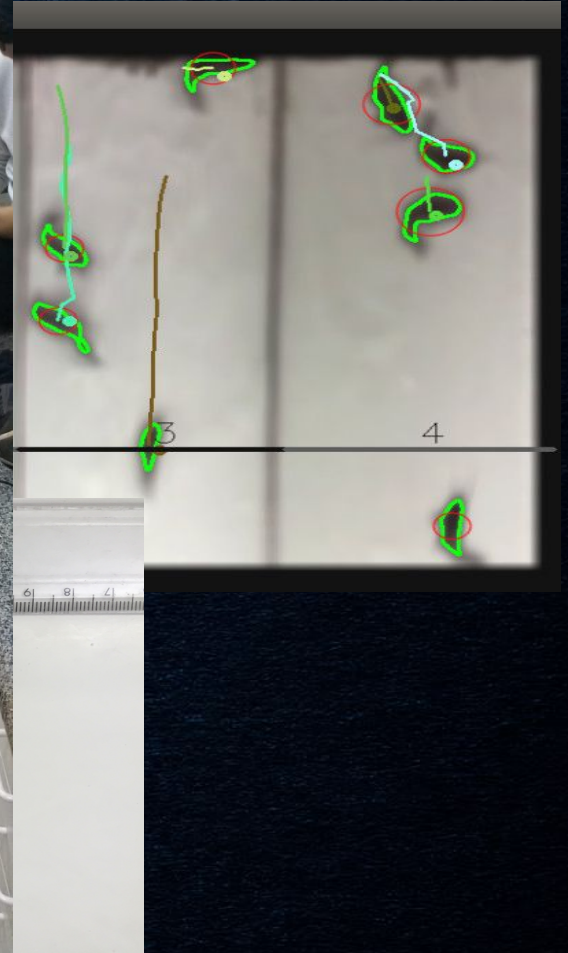
# Contagem e Estimativa de Massa de Alevinos



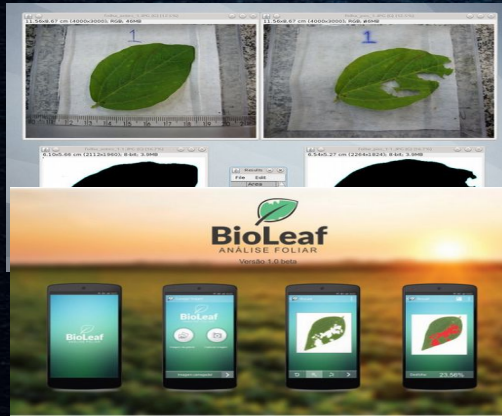
# Contagem e Estimativa de Massa de Alevinos



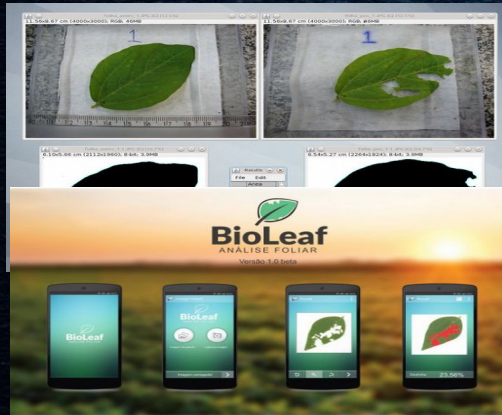
# Contagem e Estimativa de Massa de Alevinos



# Agricultura de Precisão e Visão Computacional

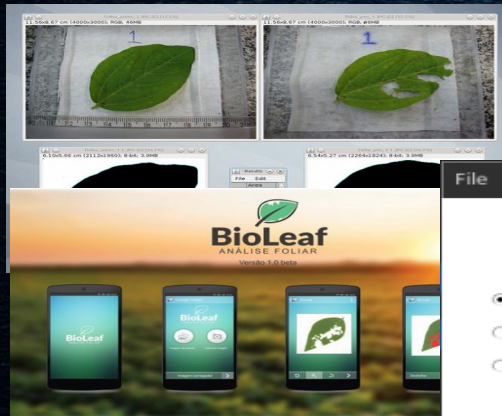


# Agricultura de Precisão e Visão Computacional





# Agricultura de Precisão e Visão Computacional



File View Dataset Segmentation Feature Extraction Classification

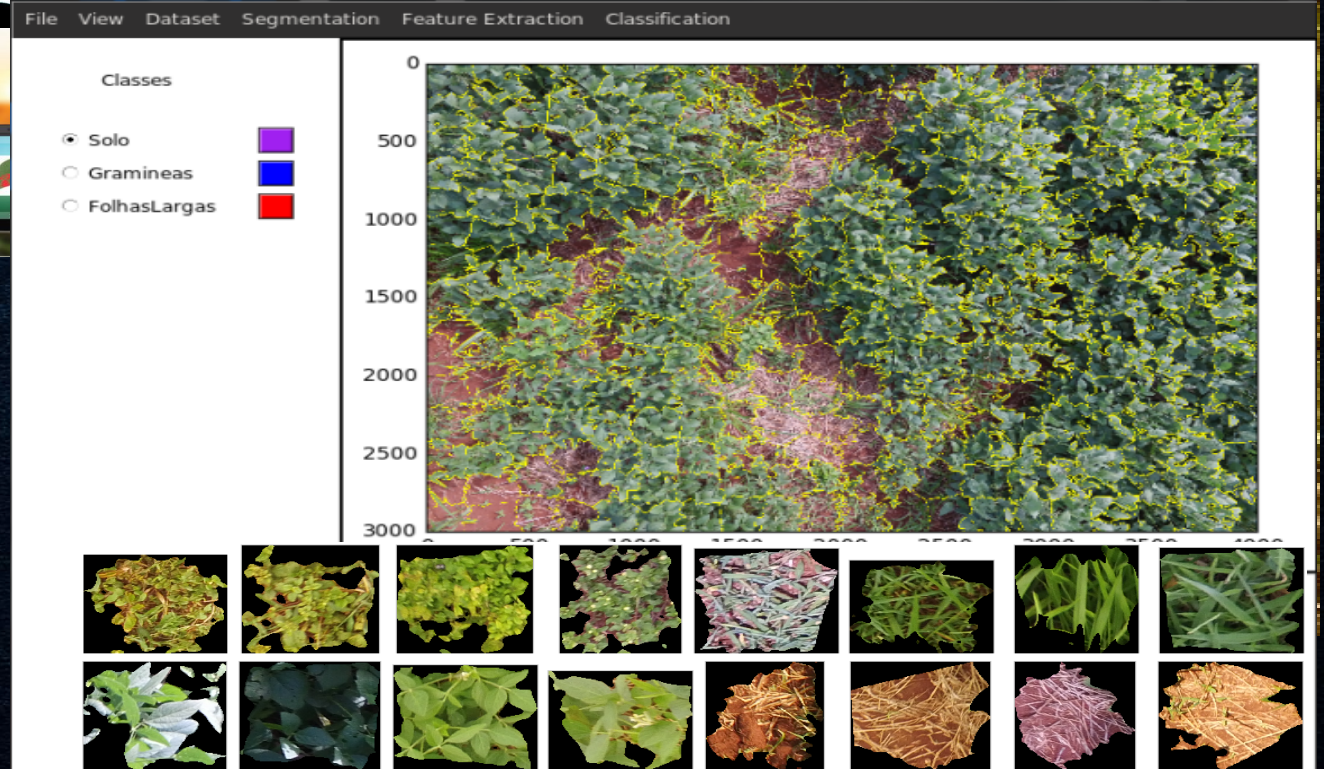
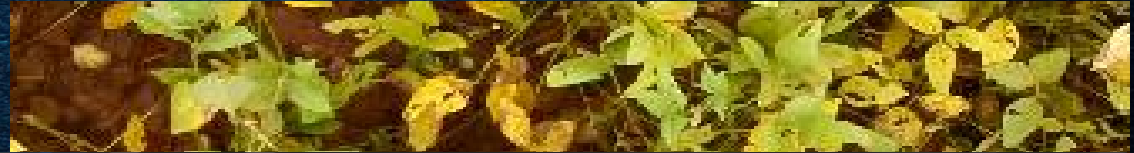
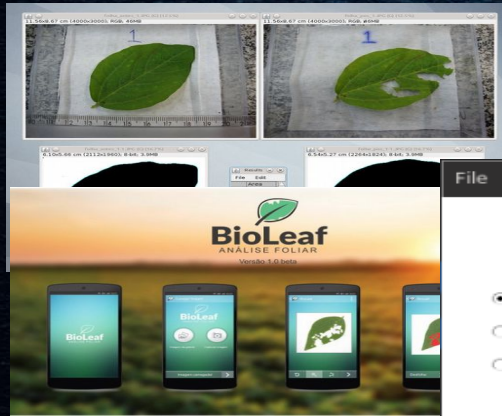
Classes

- Solo
- Gramineas
- FolhasLargas

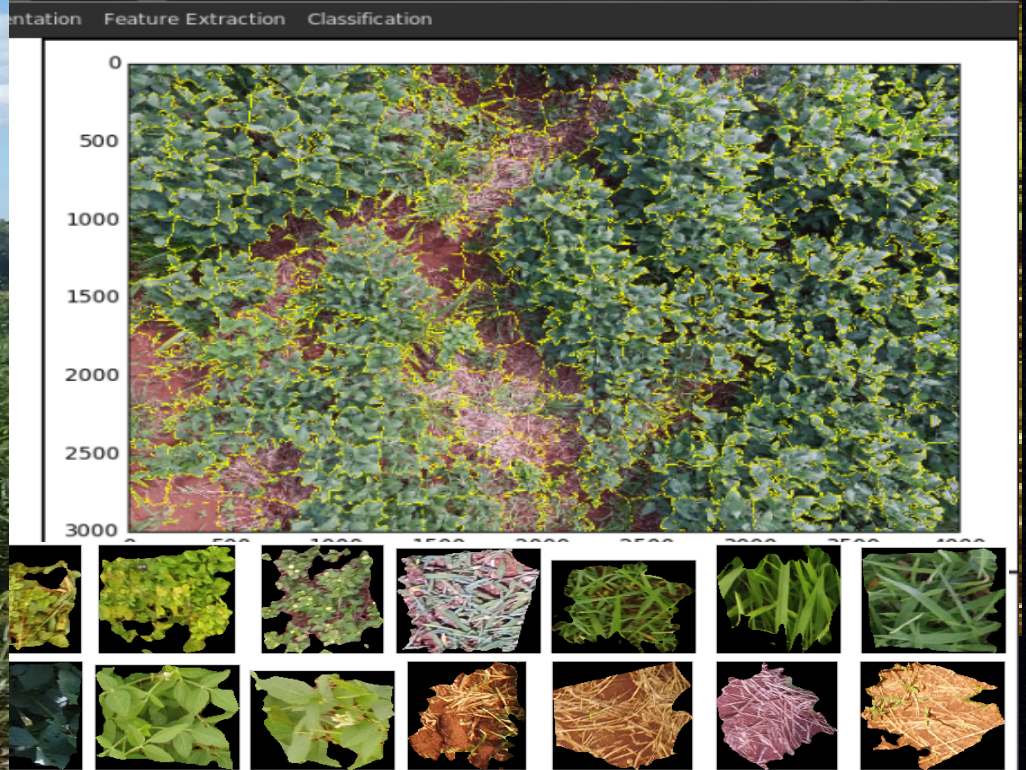
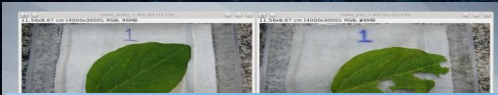
The image shows a segmented aerial view of the crop field. The field is divided into numerous small regions, each outlined with a yellow border. The background color of the field is a mix of green and brown, representing different plant types or health states. The segmentation is performed on a grid, with the x-axis ranging from 0 to 4000 and the y-axis from 0 to 3000.

```
$ Running Slic...  
Config: Segments: 300  
Sigma: 5.0  
Compactness: 30.0  
Border Color: Yellow  
Border Outline: Yes
```

# Agricultura de Precisão e Visão Computacional



# Agricultura de Precisão e Visão Computacional



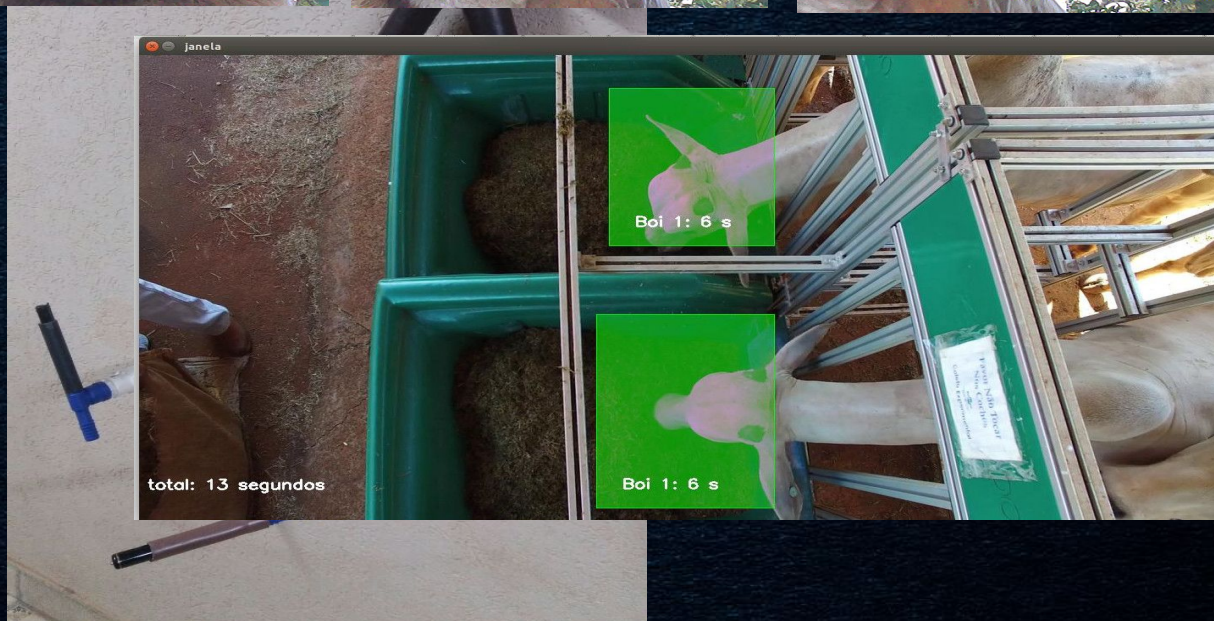
# Pecuária de Precisão e Visão Computacional



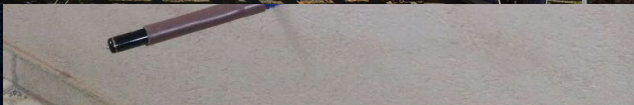
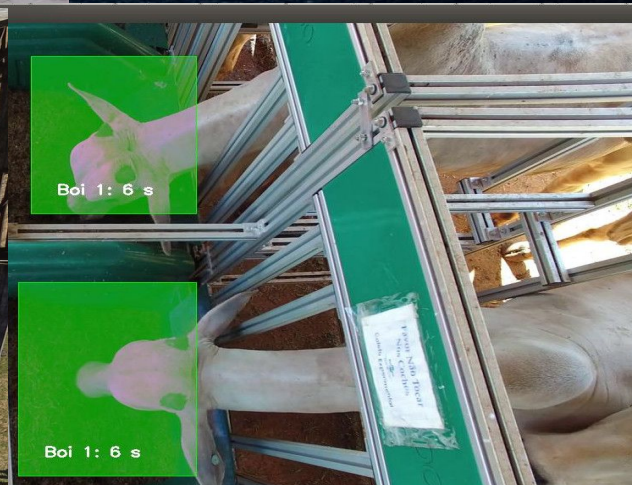
# Pecuária de Precisão e Visão Computacional



# Pecuária de Precisão e Visão Computacional



# Pecuária de Precisão e Visão Computacional





Muito Obrigado !!!

Contato: [pistori@ucdb.br](mailto:pistori@ucdb.br)

